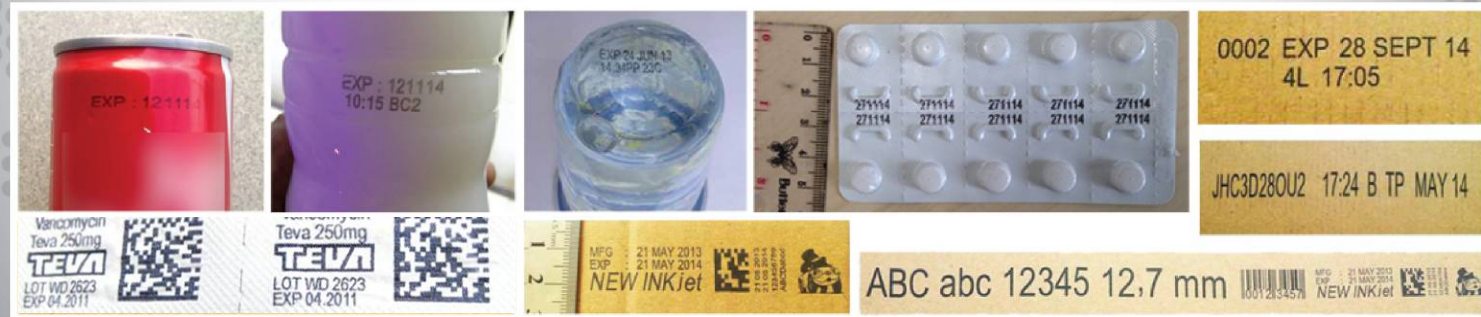


PRINT SAMPLES



FEATURES

Selectable Languages

Chinese, English, Japanese, French, German, Spanish, Portuguese and Russian

Fonts

Default font is Arial, allows users to load the fonts they need

Barcodes

UPCA, UPCE, EAN13, EAN8, INT25, CODE39, CODE128, ENA128, PDF417, DATAMATRIX, QR (Allows user to add the barcode)

Date Format

Variety of date modes available (Production Date, Effective Date, Expiration Date, etc)

Counters

Flexible setting for serial number, Lot-Box code counters

Print Speed

Print speed can be set, auto-measuring or using external synchronizer

Multi-Management

Multi-level password protection (Operator, Technician and Administrator)

PC Control

Multiple devices controlled via PC software

*Date and counters can be switched to variable barcode printing

TECHNICAL PARAMETERS

Technology

HP TIJ2.5, Utilizing HP driver board for reliability of printing quality

Dimensions

(H*W*D): 142*65*98mm/ 5.6*2.6*3.9inch
(Anti-shock cover is not included)

Power Supply

AC 90V-240V/50-60HZ, 60W (Dedicated AC Adaptor)

Printable Height

1~12.7mm

Printing Speed

0-60 m/min (300 DPI)

Resolution

50-600 DPI

Port

- 1) Ethernet: 100Mb/s, Synchronized control of multiple devices via PC
- 2) USB 2.0, Support U-Disk
- 3) DB15, For external devices like photocell, synchronizer or alarm kit connection

Printing Objects

Barcodes, Character, Numeric, Logos, Date/Time, Expiry Date, Shift Code, Counter, Lot-Box Code

Interface

- 1) 5inch 800*480 color LCD touch screen
- 2) 90 degree flip-screen design

Ink Management

- 1) Automatically recognize the ink types, and identify the optimum printing parameters
- 2) Guarantee of using genuine original HP ink
- 3) Automatic measuring system for the usage of the ink

Mounting

Standard side, downside and anti-shock printing bracket

Product Certification

CE, FCC

Environment

- 1) Working Environment: -10° -- +55°C, 10%-85%RH
- 2) Storage Environment: -25° -- +80°C, 10%-90%RH

INK SOLUTIONS

- 1) Support 42ml, 370ml, and 350ml cartridges of HP TIJ2.5 technology
- 2) Support various colors of ink: black, red, green, blue
- 3) Support Porous, semi-porous and non-porous materials

E-mail: support@galasolutions.com.au

E-mail: support@galas.co.nz

Australian Branch

PO Box 213, Oxenford, QLD
Unit 3A, 16 Millaroo Drive, Helensvale
Queensland 4210, Australia
Tel: (+61) 7 5665 8284

New Zealand Branch

PO Box 51793, Auckland 2140
81E Cryers Rd, East Tamaki
Auckland 2013, New Zealand
Tel: (+64) 9 271 0593

Printjet

SERIES



THE BEST INDUSTRIAL PRINTER IN THE MARKET



“The most user friendly inkjet printer. Super compact. Just plug and play.”



GALA Solutions Ltd

Your Coding Specialist & Partner

GALA Solutions Ltd

Your Coding Specialist & Partner

PH: +61 7 5665 8284 PH: +64 9 271 0593

www.galasolutions.com.au

www.galas.co.nz

Printjet 2

Uneven Surface Inkjet Printer



Printjet 3

Handheld High Resolution Inkjet Printer



THE BEST INDUSTRIAL PRINTER IN THE MARKET

THE BEST INDUSTRIAL PRINTER IN THE MARKET



“The most user friendly inkjet printer. Super compact. Just plug and play.”

Bionics Design
Human bionics design

Throw Distance Adjustable
Different sliding wheel sizes for different DPI

High-Performance Batteries
Two rechargeable batteries in standard packaging, longer than 6 hours of continuous printing

Flight Box
With flight box as standard packaging for printer and all accessories

Instant Printing
Print anywhere and anytime



Stretchable Printhead
Printhead can stretch from 0-12mm

Uneven Surface Printing
Suitable for curve and uneven surface

Variable throw distance supported
Different deflectors available for different curves

5" 5 Inch LCD Touch Screen
5 inch 800x480 color LCD touch screen

Text Vector Font Editor
Multi-fonts editing supported

600 DPI High Resolution
High resolution up to 600 DPI

“The most user friendly inkjet printer. Super compact. Just plug and play.”

*1 Year Warranty

*1 Year Warranty